



For Lease

315 N. PUENTE STREET, UNIT D
BREA, CA 92821



±3,446 SQUARE FOOT FLEX/INDUSTRIAL CONDOMINIUM

PROPERTY FACTS

± 3,446 square foot flex/industrial condominium

±1,200 square feet of warehouse space

± 800 square foot bonus mezzanine (permitted)

1 Ground Level Loading Door

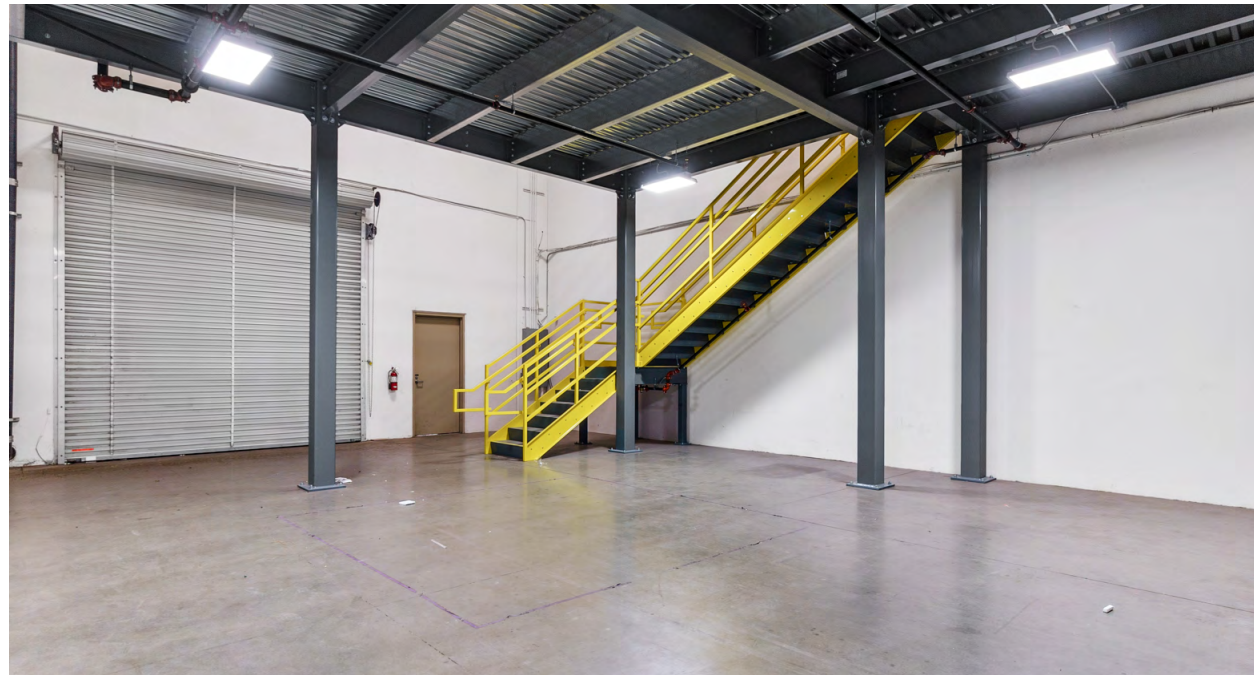
± 24 Warehouse Clearance

3 private offices, lobby, bullpen and 2 restrooms

Street frontage

Located within The Reserve, a professional business park

Built in 2008



Ethan Alvidrez

REAL ESTATE BROKER
CA DRE 01431561

949.677.9704

ETHAN@FARWESTCOMMERCIAL.COM

18012 COWAN, SUITE 200, IRVINE, CA 92612

FAR WEST COMMERCIAL

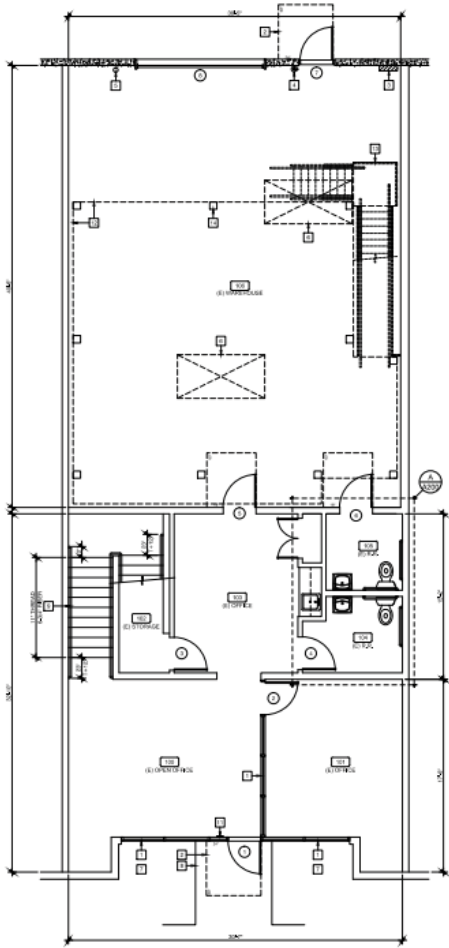
VIEW MORE ONLINE AT

FARWESTCOMMERCIAL.COM

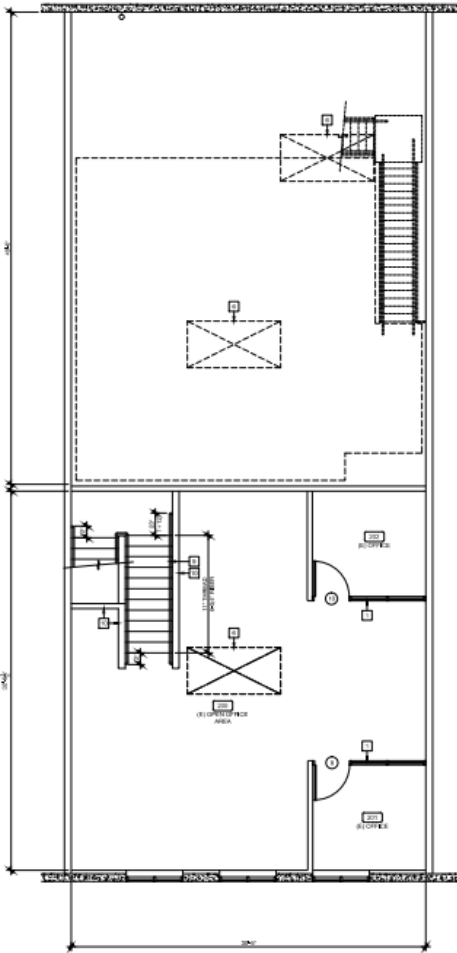


BUILDING FLOOR PLAN / AERIALS

FIRST FLOOR



SECOND FLOOR



Ethan Alvidrez
REAL ESTATE BROKER
CA DRE 01431561

949.677.9704
ETHAN@FARWESTCOMMERCIAL.COM
18012 COWAN, SUITE 200, IRVINE, CA 92612

FAR WEST COMMERCIAL
VIEW MORE ONLINE AT
FARWESTCOMMERCIAL.COM



ADDITIONAL PHOTOS



Ethan Alvidrez
REAL ESTATE BROKER
CA DRE 01431561

949.677.9704
ETHAN@FARWESTCOMMERCIAL.COM
18012 COWAN, SUITE 200, IRVINE, CA 92612

FAR WEST COMMERCIAL
VIEW MORE ONLINE AT
FARWESTCOMMERCIAL.COM



FAR WEST
COMMERCIAL



FAR WEST
COMMERCIAL



FAR WEST
COMMERCIAL

ST
CIAL



FAR WEST
COMMERCIAL



FAR WEST
COMMERCIAL



FAR
COM

Interested in this property?

GET IN TOUCH TO DISCUSS FURTHER.



FAR WEST
COMMERCIAL

FAR WEST
COMMERCIAL

949.677.9704 • 18012 COWAN, SUITE 200, IRVINE, CA 92612

ETHAN@FARWESTCOMMERCIAL.COM

ST
CIAL



FAR WEST
COMMERCIAL



FAR WEST
COMMERCIAL



FAR
COM

FAR WEST
COMMERCIAL



FAR WEST
COMMERCIAL



FAR WEST
COMMERCIAL