

# FOR SALE

15135 WOODLAWN AVENUE  
TUSTIN, CA 92780



FAR WEST COMMERCIAL



## PROPERTY FACTS

±5,068 SF flex/Industrial condo

±1,160 SF warehouse

Built 2004

Fiber lit

Over 24 ft. warehouse clearance

±9 ft. x ±11 ft. GL door

Abundant natural light

Prominent corner location

Located within Pacific Business Center

Sprinklers

Association dues \$690 per month

Double door entry

Sonitrol fire and security alarm

250 AMPS + 200 AMP Panels (Buyer to verify)

Tour by appointment



Ethan Alvidrez

REAL ESTATE BROKER  
CA DRE 01431561

949.677.9704

ETHAN@FARWESTCOMMERCIAL.COM

18012 COWAN, SUITE 200, IRVINE, CA 92612

FAR WEST COMMERCIAL

VIEW MORE ONLINE AT

FARWESTCOMMERCIAL.COM





ADDITIONAL PHOTOS



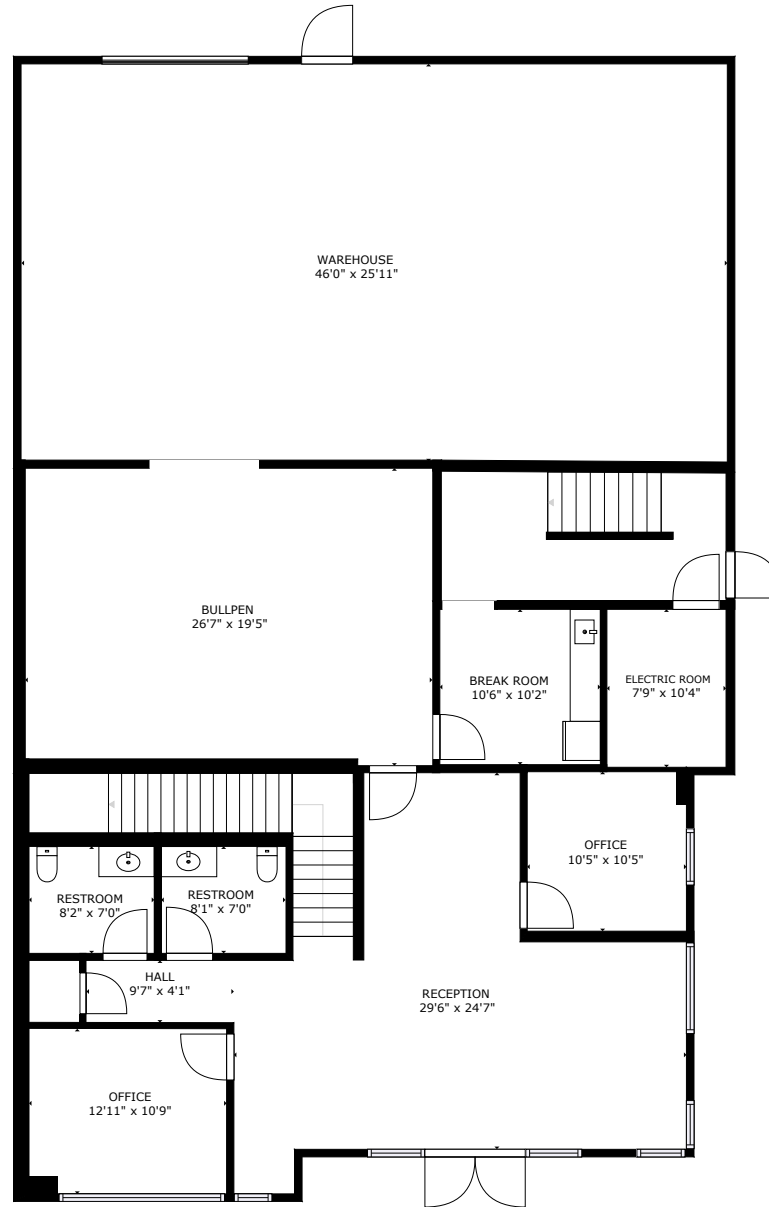
Ethan Alvidrez  
REAL ESTATE BROKER  
CA DRE 01431561

949.677.9704  
ETHAN@FARWESTCOMMERCIAL.COM  
18012 COWAN, SUITE 200, IRVINE, CA 92612

FAR WEST COMMERCIAL  
VIEW MORE ONLINE AT  
FARWESTCOMMERCIAL.COM



# FIRST FLOOR



GROSS INTERNAL AREA  
FLOOR 1: 3226 SQ. FT, FLOOR 2: 1992 SQ. FT  
TOTAL: 5217 SQ. FT  
Sizes and dimensions are approximate, actual may vary.



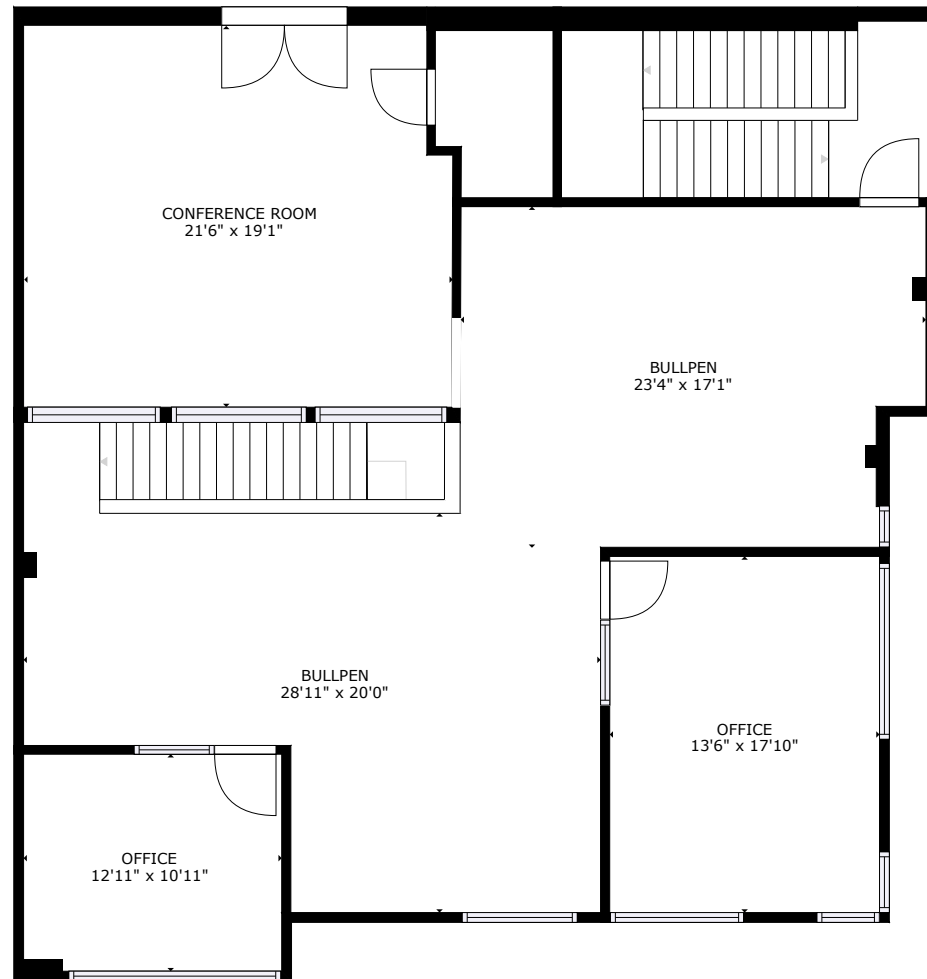
**Ethan Alvidrez**  
REAL ESTATE BROKER  
CA DRE 01431561

949.677.9704  
ETHAN@FARWESTCOMMERCIAL.COM  
18012 COWAN, SUITE 200, IRVINE, CA 92612

**FAR WEST COMMERCIAL**  
VIEW MORE ONLINE AT  
**FARWESTCOMMERCIAL.COM**



## SECOND FLOOR



GROSS INTERNAL AREA  
FLOOR 1: 3226 SQ. FT, FLOOR 2: 1992 SQ. FT  
TOTAL: 5217 SQ. FT  
Sizes and dimensions are approximate, actual may vary.



**Ethan Alvidrez**  
REAL ESTATE BROKER  
CA DRE 01431561

949.677.9704  
ETHAN@FARWESTCOMMERCIAL.COM  
18012 COWAN, SUITE 200, IRVINE, CA 92612

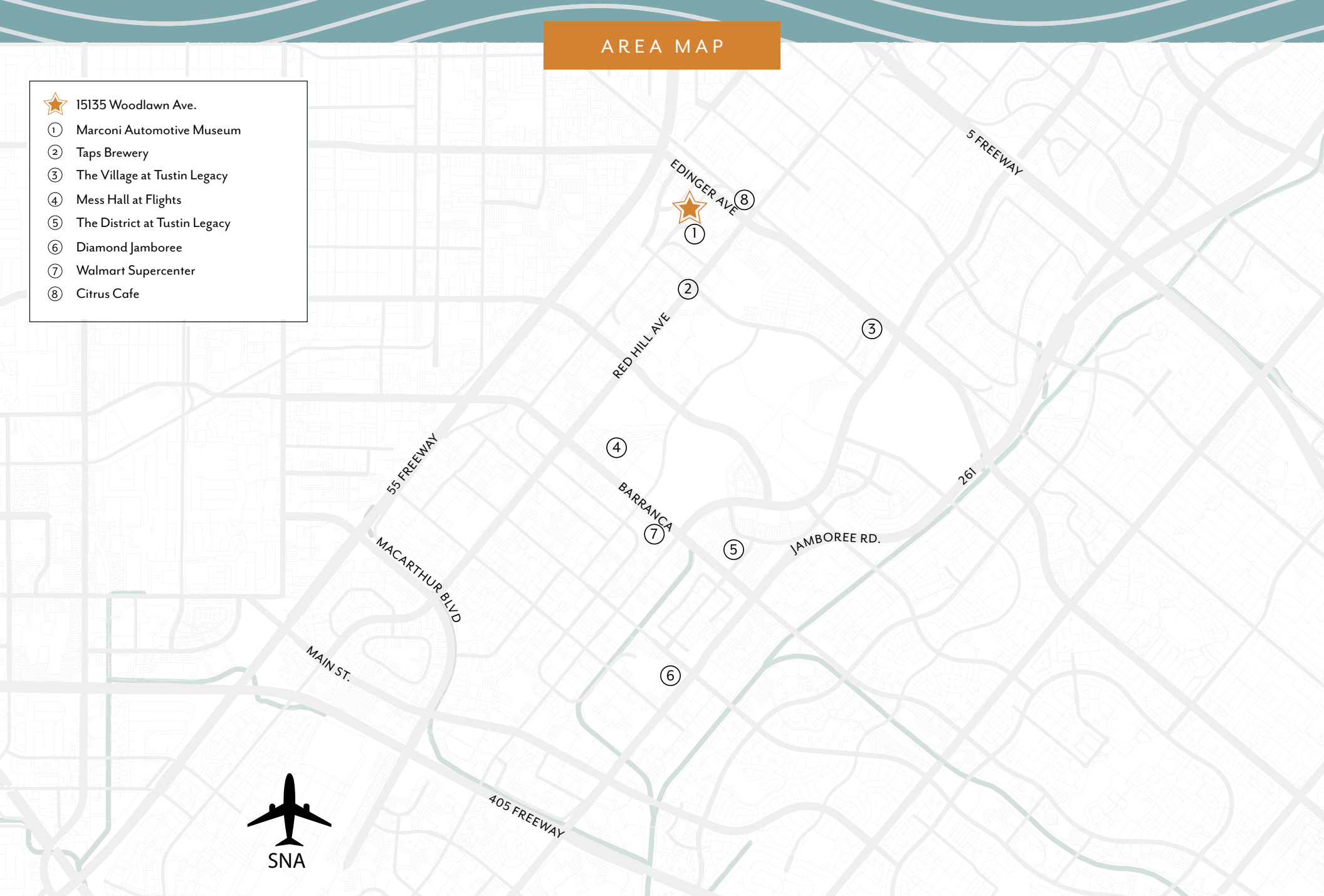
**FAR WEST COMMERCIAL**  
VIEW MORE ONLINE AT  
[FARWESTCOMMERCIAL.COM](http://FARWESTCOMMERCIAL.COM)





# AREA MAP

- ★ 15135 Woodlawn Ave.
- ① Marconi Automotive Museum
- ② Taps Brewery
- ③ The Village at Tustin Legacy
- ④ Mess Hall at Flights
- ⑤ The District at Tustin Legacy
- ⑥ Diamond Jamboree
- ⑦ Walmart Supercenter
- ⑧ Citrus Cafe



**Ethan Alvidrez**  
REAL ESTATE BROKER  
CA DRE 01431561

949.677.9704  
ETHAN@FARWESTCOMMERCIAL.COM  
18012 COWAN, SUITE 200, IRVINE, CA 92612

**FAR WEST COMMERCIAL**  
VIEW MORE ONLINE AT  
[FARWESTCOMMERCIAL.COM](http://FARWESTCOMMERCIAL.COM)



FAR WEST  
COMMERCIAL



FAR WEST  
COMMERCIAL



FAR WEST  
COMMERCIAL

ST  
CIAL



FAR WEST  
COMMERCIAL



FAR WEST  
COMMERCIAL



FAR  
COM

Interested in this property?

GET IN TOUCH TO DISCUSS FURTHER.



FAR WEST  
COMMERCIAL

FAR WEST  
COMMERCIAL

949.677.9704 • 18012 COWAN, SUITE 200, IRVINE, CA 92612

[ETHAN@FARWESTCOMMERCIAL.COM](mailto:ETHAN@FARWESTCOMMERCIAL.COM)

ST  
CIAL



FAR WEST  
COMMERCIAL



FAR WEST  
COMMERCIAL



FAR  
COM

FAR WEST  
COMMERCIAL



FAR WEST  
COMMERCIAL



FAR WEST  
COMMERCIAL